



**15-18
APRIL
2021**

OPEN GRODNO CUP



BULLETIN 2



«OPEN GRODNO CUP 2021»

IOF World Ranking Events (Long and Sprint)
Stages of the Belarus Orienteering Federation Cup (Elite Cup, Sprint Cup,
Master Cup and Junior Cup)

15-18 april 2021

Bulletin 2

Organizers:

- International Orienteering Federation (IOF);
- Belarus Orienteering Federation (BFO);
- Grodno City Executive Committee;
- Grodno Region Executive Committee;
- Grodno Region Orienteering Federation;
- Grodno State Regional Palace of Children and Youth;
- Kronan Orienteering Club

We invite you to take part in the world ranking events of International Orienteering Federation (IOF WRE) in Grodno. They are a part of traditional team competitions "Open Grodno Cup 2021" in Grodno, Belarus.

Competitions have been held since 1977.



COMPETITION VENUE

Grodno city is located in the west of Belarus, 30 km from the border with Lithuania, and 20 km from the border with Poland.

Distances to Grodno:
from Vilnius, Lithuania – 169 km;
from Kaunas, Lithuania – 170 km;
from Warsaw, Poland – 270 km;
from Minsk, Belarus – 278 km;
from Riga, Latvia – 429 km.

EVENT CENTER / CONTACTS

Event center:

Kronan Orienteering Club, 1 Kolozhsky Park, Grodno 230000, Belarus
(Grodno State Regional Palace of Children and Youth)

Postal address for correspondence:

47-1 Vovzhetskogo, Grodno 230027, Belarus

Contact persons:

Russian, Polish Edward Arodz tel.: +375 29 588 99 11

E-mail: arodz.ed@gmail.com

Russian, English: Dmitry Mikhalkin, +375 29 6983946

E-mail: dmitrij_mihalkin@mail.ru

Organizers:

Event Director	Edvard Arodz
Event Secretary	Dmitry Mikhalkin
Head of organizational issues	Siarhei Hurynovich
Head of course setters team	Kanstantsin Bryhinets
BFO Controller	Andrei Yakauleu
IOF Event Adviser	Valery Marchuk

Event website: www.kronan.by **Interactive** [Google map](#)

SCHEDULE

<u>16.04.2021</u> [Friday]	11.00 – 13.00 13.15 – 13.30 14.00	Registration at the Arena Opening ceremony of «OPEN GRODNO CUP – 2021» Middle distance competitions
<u>17.04.2021</u> [Saturday]	9.30-10.30 11.00 17.00	Registration at the Arena Long distance competitions (IOF WRE M/W21E). Stage of the Belarus Orienteering Federation Cup (Elite Cup, Master Cup and Junior Cup) Flower ceremony for the Long distance IOF WRE. Classes M21E and W21E. Orient-show, entertainment, show program
<u>18.04.2021</u> [Sunday]	10.00 12.00 12.15 before 13.30	Sprint competitions (IOF WRE M/W21E). Stage of the Belarus Orienteering Federation Sprint Cup. Flower ceremony for the Sprint distance IOF WRE. Classes M21E and W21E. Lottery Prize-giving and closing ceremony of «OPEN GRODNO CUP – 2021»

CLASSES

Men and Women: 10, 12, 14, 16, 18, 21E, 21A, 35, 40, 45, 50, 55, 60, 65, 70, 80, Open;

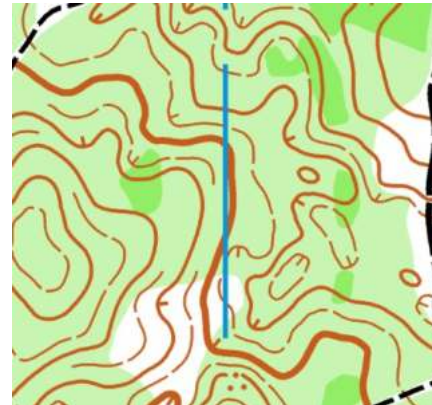
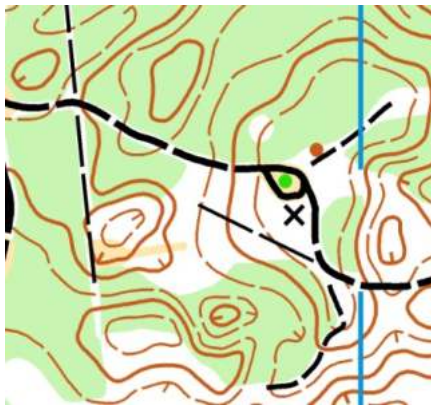
Classes M/W10 – marked course.

In case of small number of participants in the classes (less than 5), the organizers reserve the right to combine classes.

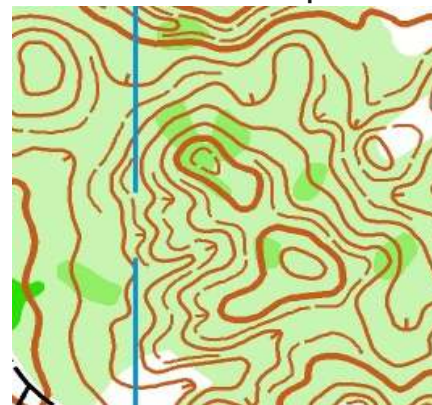
The number of athletes in the team is not limited.

MAPS

MIDDLE DISTANCE STARINA Usenko S., 2018



LONG DISTANCE ZARITSA Usenko S. New map.



SPRINT ZAMKOVAYA Efimenko A. New map.



ENTRY AND PAYMENT

ENTRY AND PAYMENT

The costs of organizing and conducting competitions are borne by the organizers.

Participants cover their expenses (travel, accommodation, food, entry fee).

To apply for the competition, you must fill in the [entry form](#).

All athletes of the M/W21E classes participating in the IOF WRE start must create their account in the [IOF Eventor](#) system and additionally make entry for participation in the ranking start through the [IOF Eventor](#) system.

When receiving the start package, please present a medical certificate of your state of health, certified by a doctor. Participants older than 18 years may present a signed acknowledgement of personal responsibility over their health and safety (a form will be available at the competition website and in the start package).

ENTRY FEE:

Classes	Date	before 10.04.2021 (3 days/1 day)	11.04 – 14.04.2021 (3 days/1 day)
M/W 10-18, M/W 60-80		20/8 BYN	30/12 BYN
M/W 21A, 35-55		30/12 BYN	45/18 BYN
M/W 21E		40/16 BYN	60/24 BYN

Entry fee for OPEN – 6 BYN/day (Entry at the Arena – 8 BYN/day.)

1 EUR ≈ 3,1 BYN

A discount system is in place at the competition:

minus 100% of the entry fee:

- honorary BOF members;
- members of Kronan Orienteering Club.

The entry fee amount will be stated opposite each participant's surname in the list of registered participants.

The entry fee and the SI card rental amount need to be transferred to the bank account before 11.04.2021, in this case the sum of the fee is defined based on the entry date. Starting from 12.04.2021, the amount of the entry fee will be defined based on the payment date.

No sanctions will be applied regarding the entry date for Open class.

Cash payment during the competition is allowed only for foreign participants. The sum of payment is determined according to the entry date.

The entry fee will not be returned to participants who will not arrive.

Payment details:

RECIPIENT: Grodno region Orienteering Federation

UNP: 590374378

Bank: OJSC "ASB Belarusbank", Branch No. 400, 230023 Grodno, Ozheshko Street, 4

BIC: AKBBBY21400

IBAN: BY35 AKBB 3015 0000 4602 7400 0000

Purpose of payment: financing of competitions.

Payer: specify payer's name or team name (in case of group payment).

ORIENT-SHOW (Super Sprint)

Orient-Show (Super Sprint) competitions will take place on Saturday 17.04 in 17.00 in Prival Recreation Center. This event will be held without ranking by age classes. All competitors will be divided only to "Men" and "Women" classes. To apply for Super Sprint competition you may do directly in Event Office until 10.30 17.04. Entry fee is 5BYN. Transportation of participants from Grodno to Prival Recreation Center and back will be carried out by organizers' buses free of charge.

PUNCHING SYSTEM

SportIdent punching system will be used at the competitions. Participation with personal SI-card of any series is allowed. Contactless punching system SPORTident AIR+ will be active.

SI-cards may be rented from the organizers for 3 BYN (ca. 1€) for all days. Contactless AIR+ SI-cards may be rented from the organizers for 8 BYN (ca. 3€).

ACCOMMODATION

- Recreation center "Dom Rybaka" - <http://grodno-hunting.by/>
- Hotel "Sport" - <http://cskneman.by/services/gostinica-sport/>
- Hostel of College (apartment type)
- Tent Camp - Protected area, drinking water, shower, WC, electricity, firewood, grills and hotplates are allowed

Sites for booking accommodation:

- belarushotels.by;
- hotel.by;
- booking.com.



MEALS

Expenses for meals are to be covered by the participants themselves.

TRANSPORT

The athletes may use personal or public transport.

Transportation may be provided by the organizers on the 1st and the 2nd competition days by prior request.

16.04.2021 to the Middle distance arena and back (5 BYN);

17.04.2021 to the Long distance arena and back (3 BYN);

17.04.2021 to the Orient-Show arena and back (free of charge)

VISA SUPPORT

Citizens of EU countries, as well as Australia, New Zealand, United States, and some other countries do NOT need Visa to Belarus for 30 days stay if they come via Minsk National Airport (the visa-free regime does not apply to people arriving to Belarus by planes from Russia). You will need only a passport and a health insurance.

Citizens of EU countries, as well as Australia, New Zealand, United States, and some other countries do NOT need Visa to Belarus for 15 days stay if they come via border checkpoints near Grodno.

Checkpoints near Grodno:

- Bruzgi (Kuznica Bialystockaya)
- Berestovitsa (Bobrovniki)
- Privalka (Raigardas)
- Benyakoni (Shalchininkai)
- Grodno Railway Station
- Airport Grodno

You will need a passport, a health insurance, and a letter of support from the organizers. Without a visa you may ONLY visit the territory of Grodno Region and Grodno city.

More information on the website <http://www.grodnovisafree.by/en>, and by mail arodz.ed@gmail.com.

All foreign participants may get a free Visa on the basis of the invitation of the organizers of the competition, subject to applying for a Visa no later than 1 month before the start of the competition.

Contact by e-mail: arodz.ed@gmail.com

Useful links:

<https://www.belarus.by/en/travel/travel-visas>.

<https://www.belarustourism.by/>.

RESULTS

The team result is determined by the highest sum of points of the top 10 team members in any class in each day in three disciplines of program according to the points table:

Place		1	2	3	4	5	6	7	8	9	10	11...
Points	M/W 21E	100	97	94	91	89	87	85	83	81	80	79...
	M/W 12, 14, 16, 18	80	77	74	71	69	67	65	63	61	60	59...
	M/W 21A, 35, 40, 45, 50, 55, 60, 65, 70, 80	70	67	64	61	59	57	55	53	51	50	49...

In case of equal points, preference is given to the team that has the best result in long distance.

The winning teams and prize-winners are awarded with cups and diplomas.

The total individual results are determined as a sum of points of tree competition days. In case of equal sum, preference will be given to the runner that has the best result in the long distance.

Winners and prize-winners in total are awarded with medals, diplomas and memorable prizes.

Winners and prize-winners in Orient-Show are awarded with memorable souvenirs.

SPONSORS



FANCY

Nivasan



KRONAN.BY

